

PV50403U

**PORTABLE 10.1 INCH
4-CH SDI&HDMI VIDEO SWITCHER**



10.1 Inch IPS FHD Display

The all-in-one switcher with an integrated 10.1 inch FHD IPS screen and solid metal case. You can clearly view PVW, PGM with audio bar, multiviewer, clock and menu setting on the screen.



Scaled Output & Multiview

Flexible to accept 4 input sources with different format and frame rate, with build-in scaler, PGM output can be scaled to 1080i and 1080p. And Multiviewer output make it easy to monitor 4 channels sources as well as PVW and PGM simultaneously on one display.

FUNCTION

- 10.1 inch FHD IPS LCD monitor
- 2×HDMI & 2×3G-SDI inputs, support auto-detected
- 2×HDMI PGM output, 1×HDMI multiview out, 1×USB type-C output
- All outputs are configurable and assignable
- USB for capturing and streaming on PC
- Upstream key: Luma key, Chroma key, PIP×2/ POP
- Downstream key and LOGO overlay
- T-bar/ Auto/ Cut transitions; various effects: WIPE(11×2 patterns) / MIX/ DIP
- Audio mixer: 2×SDI, 2×HDMI embedded audio and 2×MIC/line In; audio delay available
- Media library: 39 default patterns, 16 imported images, 16 captured images, 2 color generators
- LAN port for PC software remote control
- FTB/ MUTE/ STILL/ GPIO for tally



USB Capture For Streaming

Connect the switcher to a computer with Windows 7/8/10, Mac OS via USB capture output, and use software like OBS, PotPlayer, VMix, etc. to realize live streaming in Youtube, Facebook, Twitter, etc. platforms.



USK & DSK

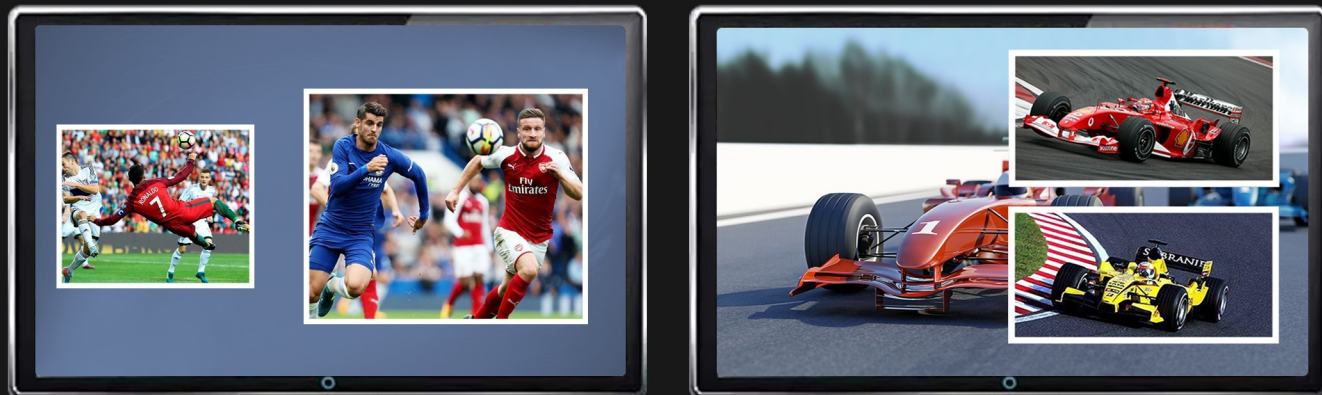
The switcher supports chroma key and luma key, which is convenient for users to key off blue/green and black background colors for virtual studio or live event applications. Besides, User can gain an exact color level by using the color picking, clip and gain key adjustment.



2 PIP/POP



The switcher has 2 PIP function that it can overlay 2 sub-screen into the PGM out, and the size and position of sub-screen can be adjusted. Besides, user can use POP to have two same-size screens overlay into PGM out.



LOGO Overlay

User can add a logo from USB flash disk into PGM. The logo's size and position can be adjusted, and the logo image can be PNG, JPG, BMP, etc. format.



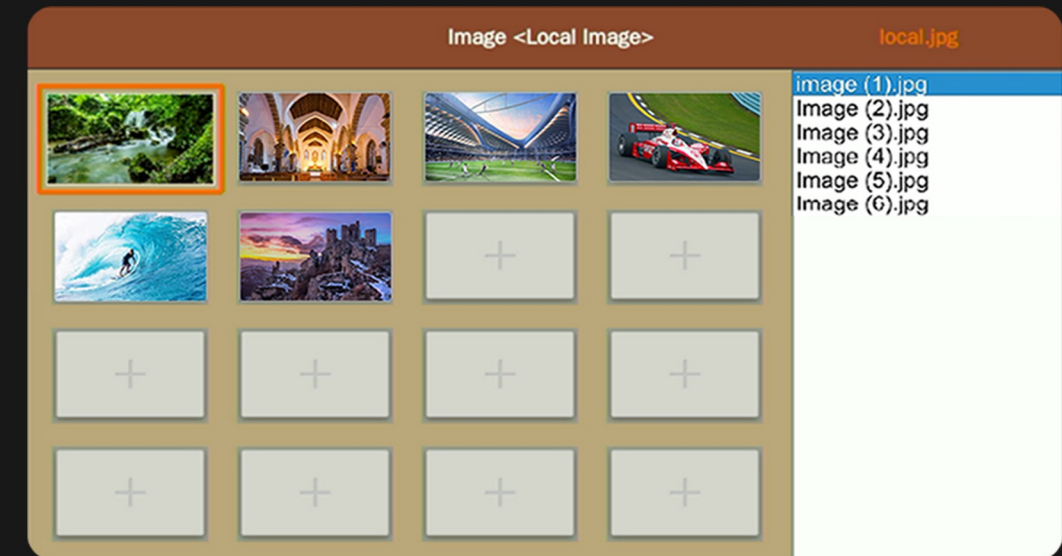
Transition Effects

There are WIPE(11×2 patterns), MIX and DIP transition effects available from the switcher. The transition effect works for switching via AUTO and T-Bar. User also can have transition without effect by switching via CUT.



Media Management

The video switcher has a powerful built-in media management function with 39 preset patterns. User also can import image from USB flash disk, or capture and store the screenshot image.



Audio MIXING /AFV

The switcher can mix 2 HDMI and 2 SDI embedded audio and 2 external analog audios (Mic/ Line-level) into the PGM out. User can turn on/off or adjust volume or audio delay for each audio independently. In addition, 2 HDMI and 2 SDI embedded audios can be set to AFV mode.



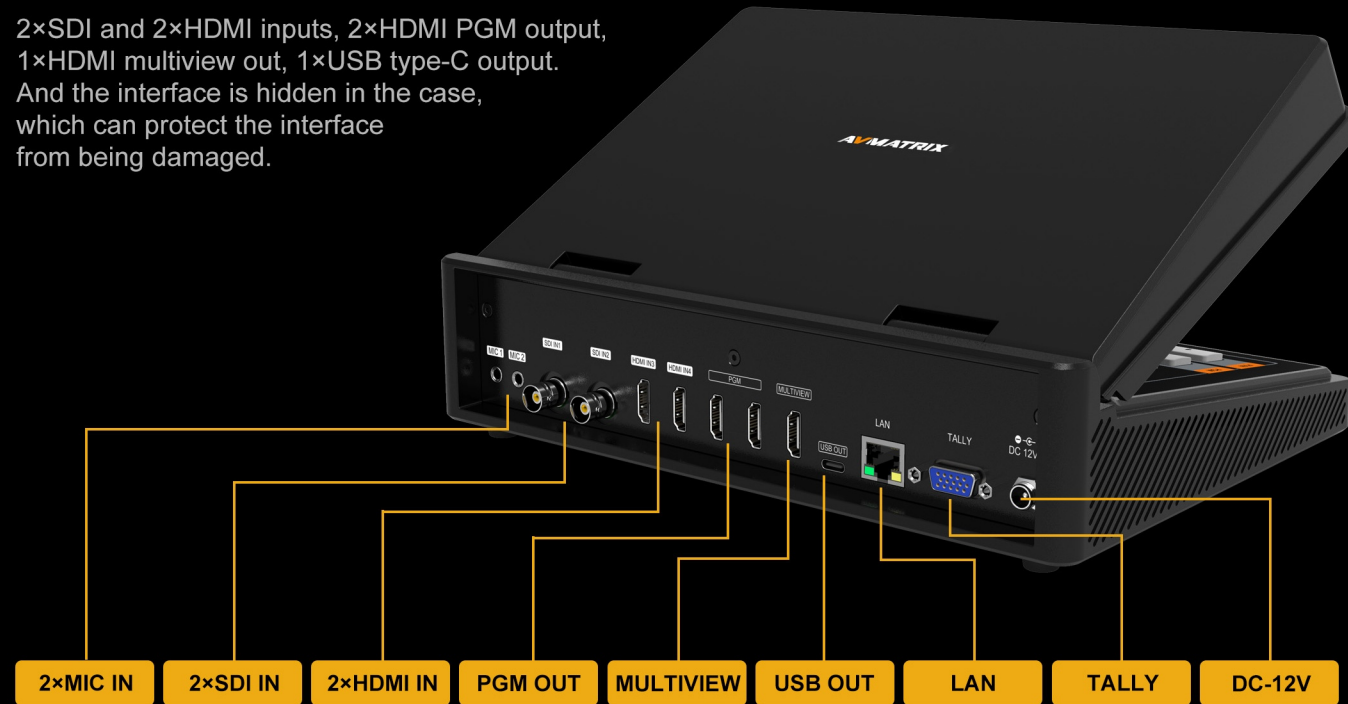
PC Control Software

A free PC control software can be downloaded from website. User can remotely control all settings of the device through the control software, including transition effects, audio configuration, multiview settings and media management, etc.



Rich Interface

2×SDI and 2×HDMI inputs, 2×HDMI PGM output, 1×HDMI multiview out, 1×USB type-C output. And the interface is hidden in the case, which can protect the interface from being damaged.



Widespread Application

The video switcher can be widely used in various field events, such as live sports, virtual studio, education, church, internet, concert, and so on.



CONNECTIONS

Video In	HDMI type-A ×2, SDI ×2
Video Out	HDMI type-A PGM ×2 HDMI type-A Multiview ×1 USB2.0 type-C ×1(Streaming on PC) SDI1~2, HDMI3~4, PGM, Clean PGM, PVW, Color bar, Multiview
Audio In	MIC/ Line ×2(3.5mm stereo audio)
PC Control Port	LAN ×1(For PC remote control)
Media Library	USB type-A ×1(For image import and firmware upgrade)
Tally Port	DB-15 ×1
Power In	DC 12V ×1

FUNCTIONS

Transitions	T-Bar/ AUTO/ CUT
Effects	WIPE(11×2 patterns)/ MIX/ DIP/ STILL(freeze)/ MUTE/ FTB
Layouts	2 styles of Multiview layout(6 windows and status)
Keys	Upstream Key: Luma Key ×1/ Chroma Key ×1/ PIP ×2/ POP Downstream Key: DSK ×1/ Logo ×1
Audio Mixer	HDMI×2, SDI×2 and MIC/ Line ×2 Audio delay: 0-500ms
Media Format	Default image: 39 preset patterns Local image: Up to 16 imported images Capture image: Up to 16 captured images
Generators	Pattern generator ×1 Color generators ×2

STANDARDS

HDMI In Format Support	1080p 60/ 59.94/ 50/ 30/ 29.97/ 25/ 24/ 23.98 1080i 50/ 59.94/ 60 720p 60/ 59.94 /50/ 30/ 25/ 24 576i 50, 576p 50, 480p 59.94/ 60, 480i 59.94/ 60
HDMI PGM Out	1080p 60/ 59.94/ 50/ 48/ 47.95/ 30/ 29.97/ 25/ 24/ 23.98 1080i 60/59.94/50
HDMI Multiview Out	1080p 60/ 59.94/ 50/ 48/ 47.95/ 30/ 29.97/ 25/ 24/ 23.98 1080i 60/59.94/50
HDMI Color Space	RGB/ YUV
SDI In Format Support	1080p 60/59.94/50/30/29.97/25/24/23.98 1080psF 30/29.97/25/24/23.98 525i 59.94 / 625i 50 1080i 60/59.94/50 625i 50 PAL 525i 59.94 NTSC
SDI Color Space	YUV
USB Capture Out	MJPEG, up to 1080p 60
Media Format	USB disk format support: FAT32, Ext3, Ext4, up to 256GB Image format support: png, bmp, jpg, gif, jpeg, ppm, pbm, tif, jps, mpo, tga(within 4096×3840) Logo format support: png, bmp, jpg, gif, jpeg, ppm, pbm, tif, jps, mpo, tga Logo size support: 10×10 pixel to 600×600 pixel

OTHERS

Power	Wide voltage: 7~24V; Operating power:12W(12V 1.8A)
Dimension (LWD)	261.4 × 193.9 ×58mm
Weight	1673.5g
Temperature	Working: -20℃~60℃, Storage: -30℃~70℃

