



Model NO: **VS0605U**

6 CHANNEL
MULTI-FORMAT STREAMING SWITCHER

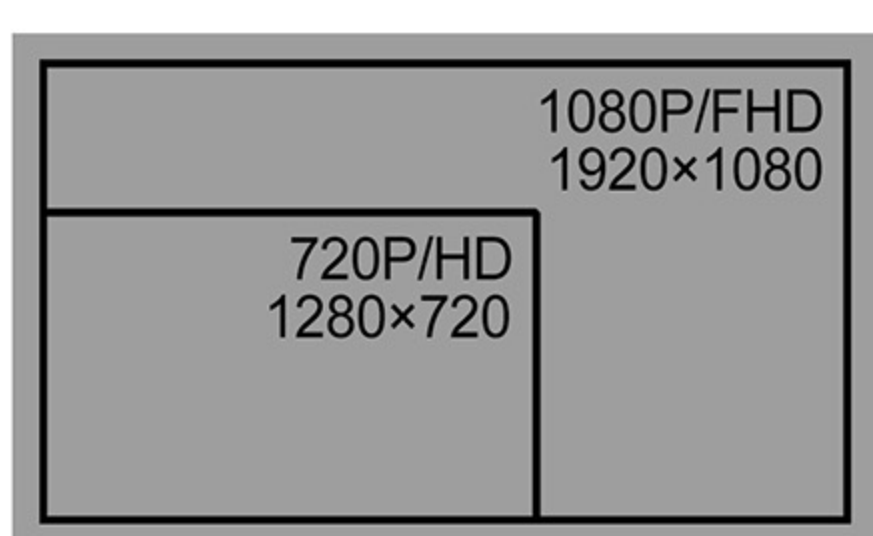
- ▶ 6 channel inputs: 4×SDI and 2×DVI-I/ HDMI/ VGA/ USB player
- ▶ Uncompressed capture for live streaming, comply with UVC & UAC
- ▶ T-Bar/ AUTO/ CUT transitions and MIX/ FADE/ WIPE effects
- ▶ Luma Key/ Chroma Key for virtual studio
- ▶ Record PGM video to SD card, up to 1080p60
- ▶ 3×SDI/ HDMI PGM outputs, 1×SDI AUX output, 2×SDI/ HDMI multiview outputs
- ▶ Remote PTZ camera control: Visca & Pelco D/P protocols
- ▶ PIP & PoP mode size and position is adjustable
- ▶ Audio mixer: XLR/ RCA audio & SDI/ HDMI/ USB embedded audio
- ▶ Tally port for multiple camera system

USB Capture For Streaming

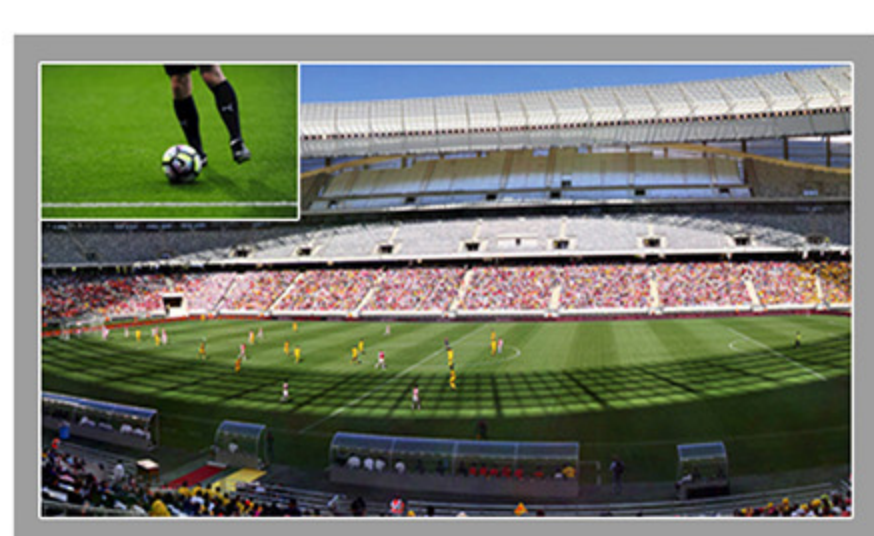
The new VS0605U features with an added built-in USB Type-C output, when connecting with PC, it will work like a webcam for capturing uncompressed video and audio quality and streaming your production to various software and platform like Twitch, Youtube, Facebook LIVE, Zoom, etc. No driver needed, and compatible with Windows 7/8/10, Linux and MacOS.



Multiview Monitoring
Multiview output make it easy to monitor 6 channels sources as well as PVW and PGM simultaneously on one display. Besides, a real time clock and menu list are located in the lower right corner of the multiview.



Multi-format & Scaler
6 different SD and HD format video sources can be detected and displayed at the same time. And the PGM output can be up/ down scaled including 1080i and 1080p.



PIP/POp
To insert a second picture into/outside the main picture. Simply adjust its size and position, then push program.



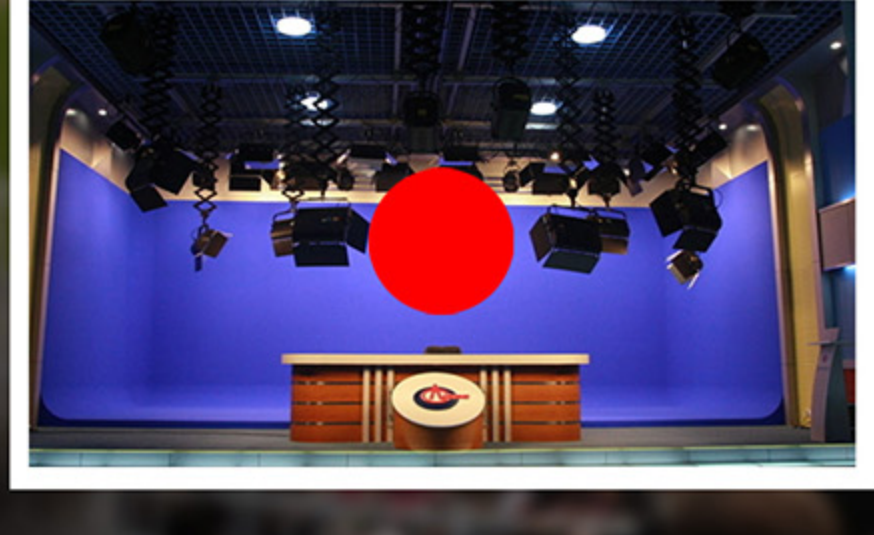
Chroma/Luma Key
Support real-time background matting, user can use Chroma key to cutout PVW green or blue background. And use the Luma Key to cutout black background.



Transition Effects
Transition between PVW and PGM with WIPE / MIX / FADE effect through T-Bar & AUTO. And there are 3 transition rates for AUTO transition.



Audio Mixer
A built-in audio mixer can mix 2 external stereo XLR & RCA audio and 6 channels of embedded audio. It's easy to control 3 stereo channels individually through the faders and corresponding buttons.



SD Card Recording
No external recorder needed, because the switcher has a built-in SD card slot for PGM recording. It's simple to have an immediate high quality (up to FHD 1080p 60hz) recording of the event from this switcher.



USB Media Players
The channel 5 and 6 support different signals such as USB media player, USB Media Player support Video and Images.



VISCA & Pelco D/P

RS-422 / RS-485
Baud rate from 300 to 115200

PTZ Camera Control

The switcher feature with PTZ controller. Two cameras' pan, tilt, zoom function can be controlled by a joystick and buttons through RS422/ RS485 port. Setting the cameras' address and select VISCA & Pelco D/P protocols from menu.



Widespread Application

The all-in-one 6 channel video switcher can be widely used in various field events, such as live sports, virtual studio, Education, internet, concert, and so on.



FUNCTIONS	Transitions & Effects	Manual T-bar/ AUTO/ CUT/Wipe/ Mix/ Fade/ FTB / Color Bar	
	Streaming	USB type-C uncompressed capture, Comply with UVC & UAC	
	Keys & Layouts	Luma Key/ Chroma Key/ PIP/ PoP/ Multiview	
	Audio Mixer	Following/ Mixing	
	Record	SD card, H.264, record for PGM up to 1080p60	
INPUTS	Video Inputs	SD/HD/3G-SDI(75Ω)×4, HDMI2.0 type-A(100Ω)×2, DVI-I(VGA-compatible)×2	
	USB Media Player	USB type-A×2	
	Analog Audio Inputs	XLR(balanced L/R)×1, RCA(L/R)×1	
	LAN	RJ45×1, Synchronize local time	
	PGM Streaming Output	USB3.0 (type-C)×1	
OUTPUTS	PGM Outputs	HD/3G-SDI(75Ω)×2, HDMI type-A(100Ω)×2	
	Multiview Outputs	HDMI type-A×1, 3G-SDI(75Ω)×1	
	Analog Audio Output	RCA(L/R)×1, 3.5mm earphone slot×1	
	Remote Camera Control	RS-422(Compatible RS-485)×1	
	Tally Port	DB-15	
STANDARDS	SDI Input Format Support	1080p 60/59.94/50/30/29.97/25/24/23.98 1080psF 30/29.97/25/24/23.98 1080i 60/59.94/50 720p 60/59.94/50/30/29.97/25/24/23.98 625i 50 PAL, 525i 59.94 NTSC	
	HDMI Input Format Support	4K 60/50/30, 2K 60/50/30 1080p 60/59.94/50/30/29.97/25/24/23.98/23.976 1080i 50/59.94/60 720p 60/59.94/50/30/29.97/25/24/23.98 576i 50, 576p 50	
	PGM Output Format	1080p 60/50/30/25/24, 1080i 60/50	
	Multiview Output Format	1080p 60	
	SDI Compliance	SMPTE 292M/ SMPTE 259M/ SMPTE 424M	
	USB Capture	Compatible with USB3.0 and USB 2.0 up to 1080p60hz	
	SIZE	Dimension(LWD)	338.7 × 260 × 70.2mm
		Weight	Net weight: 3.0kg, Gross weight: 4.0kg
	POWER	Power Supply	DC 12V 1.8A, 22W

