

Robo JR

User Manual



Prompter People™

Robo Junior

In the Box

Regular Auto-Reversing Monitor



or

Highbright Auto-Reversing Monitor



Tripod Adapter Plate

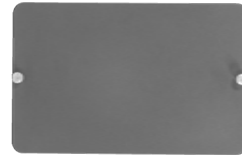


Monitor VESA Plate

Robo Junior Body



Top Plate



Back Plate



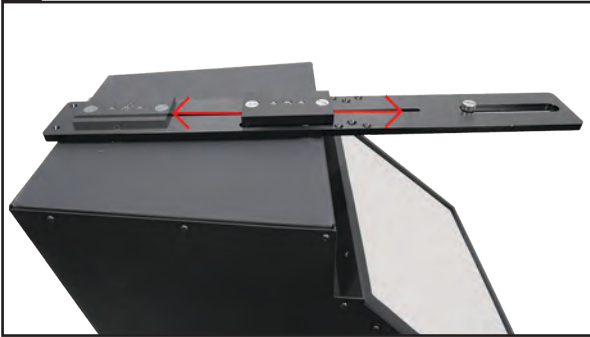
Camera Mount Screw & Adapter



Robo Junior

Quick Setup Guide

1



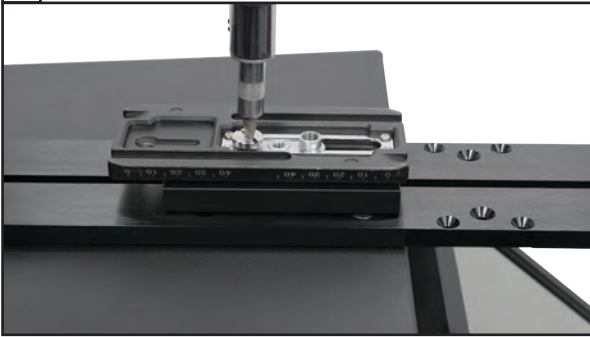
Tripod Adapter Plate comes assembled, but Screws can be loosened with a flat head screwdriver or quarter and the plate can move across the base of the Robo Jr Sled.

2



When the Tripod Adapter Plate is positioned for optimal balance, tighten the screws with a flat head screwdriver or quarter.

3



Screw your Tripod Plate into the Robo Jr. Tripod Adapter plate.

4



Attach the Robo Jr to your Tripod.

Robo Junior

Quick Setup Guide

5



Robo Jr Monitor Vesa Mount comes Assembled, but adjustments for positioning can be made.

6



Position the Monitor to reflect correctly, then use the thumbscrew to secure the Monitor into place.

7



Ensure the screw is fully and securely tightened

8



Robo Jr Properly Assembled without the Robotic / PTZ Camera.

Robo Junior

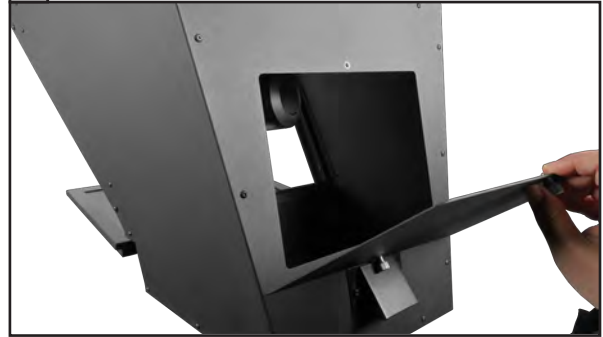
Quick Setup Guide

9



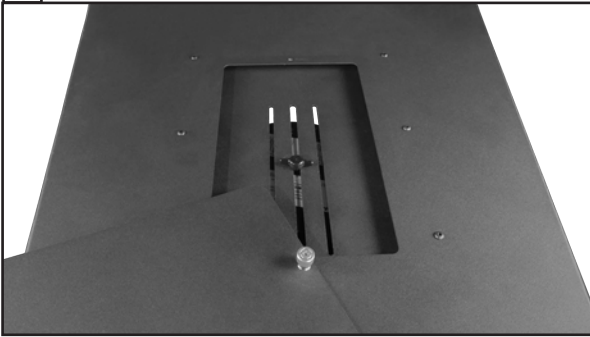
Backplate is has two thumb screws. Fully Unscrew both thumbscrews from back or Robo Jr. (Leave them set on the backplate)

10



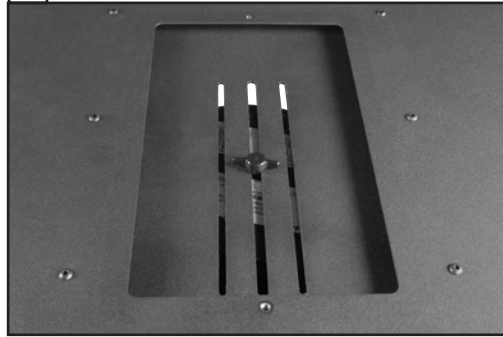
Remove the backplate from the Robo Jr.

11



Remove the Top Plate from the top of the Robo Jr.

12



Use the Thumbscrew to attach your Robotic or PTZ Camera Unit

Robo Junior

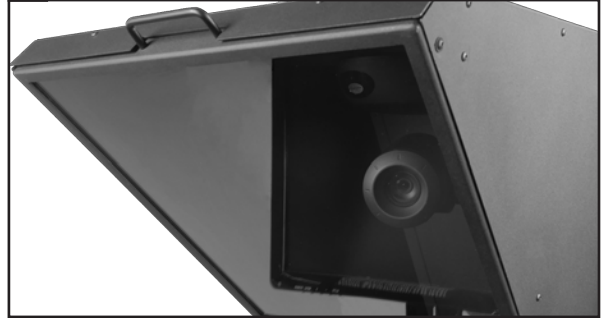
Quick Setup Guide

13



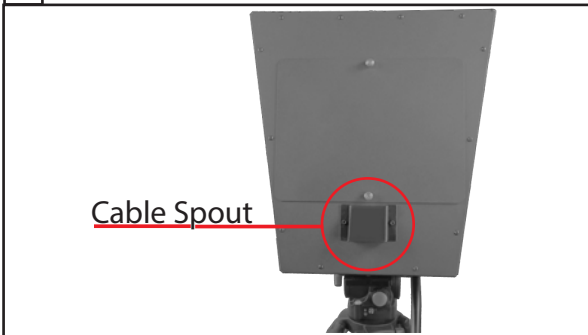
Ensure your Camera is securely and correctly mounted to the Robo Jr Top before allowing it to freely hang.

14



Ensure the PTZ / Robotic Camera is properly centered in your trapezoidal glass, so your talent is reading from the center of the screen and lens.

15



Run your PTZ Control cables out of the back spout.

Re-Place the Top and Back Panels securely with the Thumbscrews.



Robo Jr Properly Assembled without the Robotic / PTZ Camera.