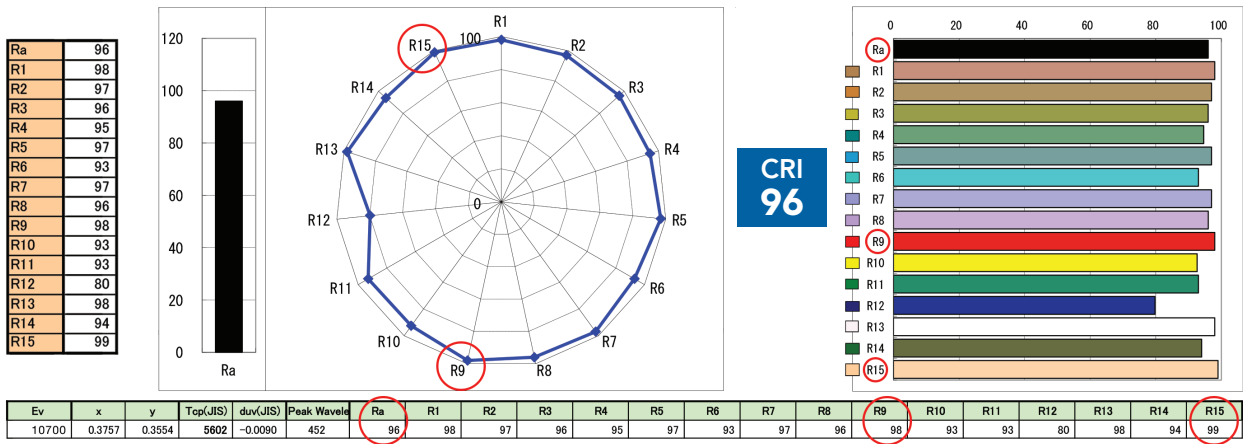




CRI TEST



TECHNICAL SPECIFICATION

ROTOLIGHT ANOVA PRO 2	
BEAM ANGLE	50 Degree
TLCI (Television Lighting Consistency Index)	91 Approved for live broadcast without correction.
OVERALL CRI (Ra) SKINTONE CRI (R15)	CRI => 96 (Skintone R15, CRI=98)
POWER CONSUMPTION @100% OUTPUT	72 Watts @100% Output 15 V DC
LUX at 3FT(0.9m) *F-STOP at ISO 100/200/400	10,700 f11 / f15/ f21
LUX at 6FT(1.82m) *F-STOP at ISO 100/200/400	2710 f6 / f8 / f11
LUX at 9FT(2.74m) *F-STOP at ISO 100/200/400	1260 f4 / f5.6 / f8
CONTROL	Local, DMX or Skyport wireless, with Dynamic Drift Compensation and Thermal Monitoring
WEIGHT	2.47 KG (body only) 3.34KG with Yoke
DIMENSIONS	440mm (W) x 493mm (H) x 107mm (D)
MOUNTING	TVMP Bracket via Yoke Optional Double Yoke, T-Connector Plate
PEAK OUTPUT	10700 Lux at 3ft (measured at midpoint of 4228 Kelvin)
LUMINOUS FLUX	5580 Lumens
COLOUR RANGE	3150K-6300K
INCLUDED FILTERS	216 - Full Diffuser, 250 - Half Diffuser 184 - Cosmetic peach Skin Tone 279 / 249 / 248 - 1/8 / 1/4 / 1/2 Magenta
BATTERY LIFE	85,000 flashes or 2 Hours (Continuous Mode)
Max Shutter Sync Speed Flash Duration at Max Power	1/8000th Adjustable from 1/50th - 1/2500th

* F-Stop measured using Rotolight V-Lock battery in Flash Mode at 4200K, 1/60th Shutter Speed

PHOTOMETRICS	LED Angle	3 ft. / 0.9m	6 ft. / 1.82m	9 ft. / 2.74m
ANOVA Pro 2 (at mid point)	50°	994fc 10700 lux	252fc 2710 lux	117fc 1260 lux

ROTOLIGHT ANOVA PRO II



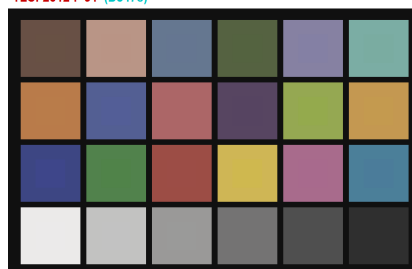
ANOVA PRO 2 sets a new standard for professional LED lighting. 70% brighter than the previous Anova, it delivers 10,700 lux at 3 feet, yet offers outstanding battery performance. Packed with innovative features for Filmmakers and Photographers, Anova Pro 2 includes an updated suite of Cinematic SFX.

integrated Elinchrom Skyport HSS flash receiver (with colour tuneable HSS flash and modelling light at 1/8000th with no recycle time), so you never miss a shot. Accucolor LED's deliver a CRI of >96 with perfect skin tones and a gorgeous catchlight. Finally, RJ45 DMX connectors have been added for studios

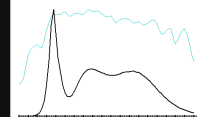
ROTOLIGHT LED TLCI TEST RESULT

Rotolight Anova Pro 2 (5600): CCT = D5478 (-2.1)
TLCI-2012 : 91 (D5478)

EBU : TLCI-2012
Alan Roberts - Oc



Sector	Lightness	Chroma	Hue
R	0	0	0
RY	0	0	-
Y	0	-	-
YG	0	-	0
G	0	0	0
GC	0	0	+
C	+	0	+
CB	+	0	+
B	0	-	-
BM	0	-	0
M	0	0	0
MR	0	0	0



Made at Pinewood Studios, England | www.rotolight.com | sales@rotolight.com | +44 (0)1753 422 750

