

STUDIO X3

BI-COLOR

Talent Light with Natural Quality

Litepanels **Studio X LED** Fresnels, engineered by world renowned broadcast lighting professionals Quartzcolor, deliver high-performance, directional, bright white light with precision spot to flood beam control and consistent quality.

Natural talent light with perfect skin tone rendering is achieved with high output Bi-Color COB LEDs to produce superior white light. With no variation in quality at any dimming level from 0-100% or across the adjustable CCT range from **2700°K to 6500°K**, Studio X Bi-Color Fresnels perfectly match ambient and practical set lighting to show talent in a naturally realistic light.

The Studio X3 Bi-Color 100W has a 5" lens with a wide spot-to-flood beam angle range of 8°-53°. With a maximum output of 5,240 lux at 10ft/3m (spot 5,600K), its output at 3,200K is similar to a 500W traditional tungsten Fresnel. Advanced thermal management ensures 50,000+ hours of LED engine life, while individual burn-in and calibration tests ensure quality and consistency.

With high-quality, single source wrap-around illumination, Studio X is the perfect choice to light your talent – naturally.



PERFECT TALENT LIGHT

- Pure, bright, and consistent white light
- Perfect skin tone rendering

FLAWLESS FRESNEL BEAM

- Even field throughout the zoom range
- Effective light control with barndoors

COMPLETE CONTROL

- DMX, RDM, and local control
- Accurate, fine dimming curve

ENDURING PERFORMANCE

- Installed in leading broadcast studios
- Advanced thermal management

Product Information

Part Number:	US	UK	EU
Standard Yoke	960-3303	960-3203	960-3103
Pole Operated	960-3313	960-3213	960-3113
Description	Studio X3 Bi-Color 100W LED Fresnel		
Includes	LCD graphic display and on-board control panel; 5-pin RDM-DMX in/out connectors; PowerCON in/out connectors; built-in universal power supply; 4-leaf rotating barndoor Ø 7.9" (200mm); 10ft (3m) PowerCON True 1 cable. US version also includes: gel frame Ø 7.8" (198mm)		

Accessories

900-6805 X3 Gel frame Ø198mm	900-6806 X3 Scrim set Ø198mm	900-6807 X3 Cone w/ variable aperture Ø200mm	900-6808 X3 4-leaf rotating barndoor Ø200mm	900-6809 X3 8-leaf rotating barn-door Ø200mm
--	--	--	---	--

Studio X3 BI-COLOR Specifications

Optical Data

LED engine	Bi-Color COB
Lens	Fresnel 130mm / 5" Ø, low expansion borosilicate
Beam angle	8° - 53°
Correlated Color Temperature	Variable 2,700K to 6,500K
CRI	97
TLCI	97

Operational Data

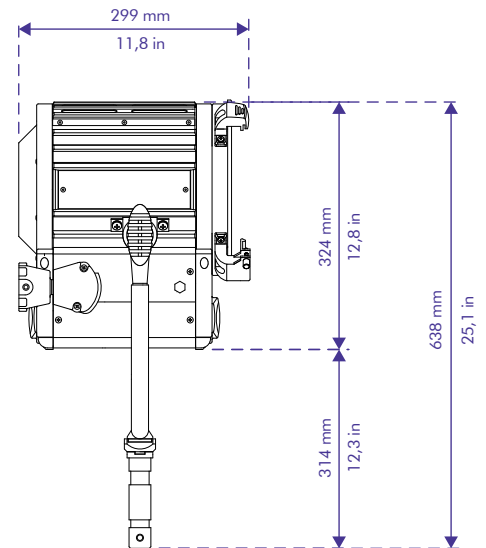
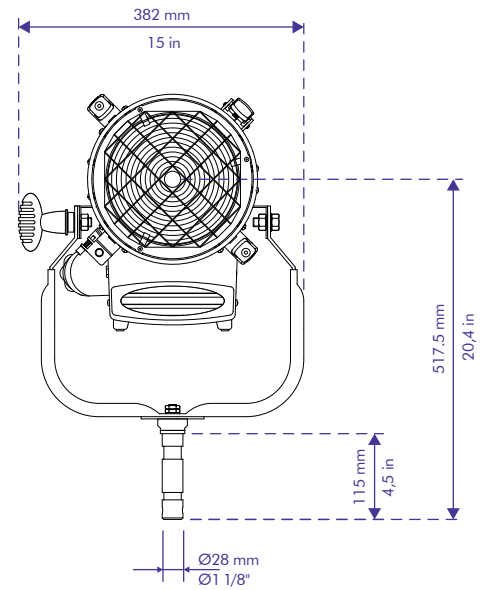
Focus adjustment	Wire focus mechanism on Teflon bushing
Dimming control	Constant Current 0-100% Continuous
Local control	Dual dial (dimming and CCT) and keypad controller with backlit LCD display
Control connections	5-Pin XLR in and through, Mini-USB
DMX control	Dimming, 8-bit and 16-bit
RDM control	DMX setup, hour counter, temperature
Fan	High efficiency convection, super silent fan with 3 speed presets
Software [Mini-USB]	Fixture status, firmware upgrade through PC
Ambient operating temperature	0° - 40°C / 32° - 104°F
Estimated LED lifetime	50,000 hrs

Mechanical Data

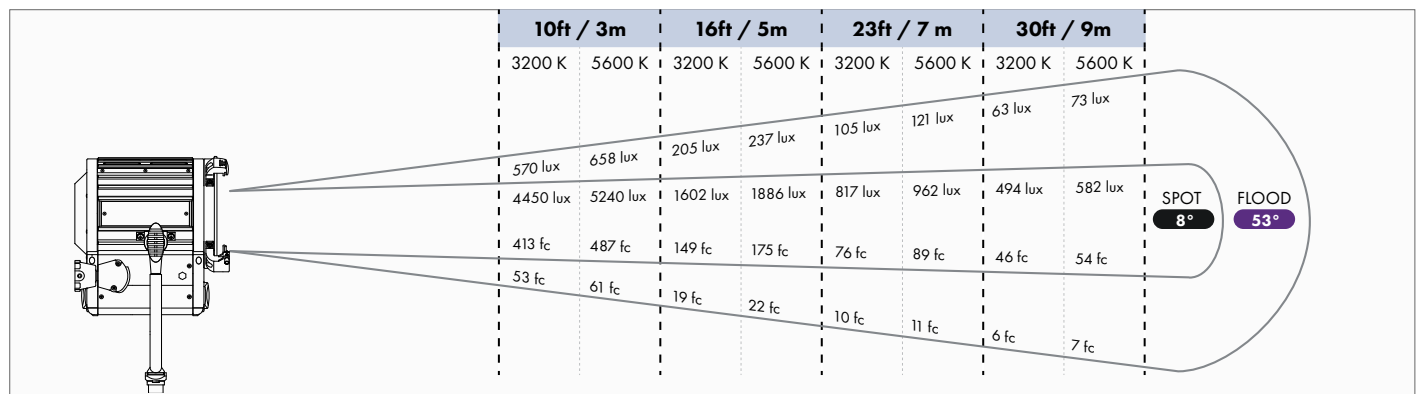
Mounting - standard	Yoke with lateral thrust bearing and lock off knob, Jr Pin [28mm / 1 1/8"]
Mounting - pole operated	Pole Operated Yoke, Jr Pin [28 mm / 1 1/8"]
Weight - standard	5.3kg / 11.68lb
Weight - pole operated	6.4kg / 14.1lb
Tilt angle	+/- 90°
Barndoor diameter	200mm / 7.9"
Safety mesh	Stainless steel 25x25mm / 1x1"

Electrical

Nominal power draw	100W maximum
Power supply	Integrated, universal
Mains input	90 - 260 Vac, 50/60 Hz, autosensing
Power connection	powerCON TRUE 1, in and through
IP rating	IP20



Photometrics



Investing in LED fixtures brings immediate benefits: up to 85% energy savings; extended LED engine life vs halogen lamp; no external dimmers required; reduced HVAC requirements due to lack of heat.

All product, specs and data are subject to change without notice
©2022, Litepanels. All rights reserved.