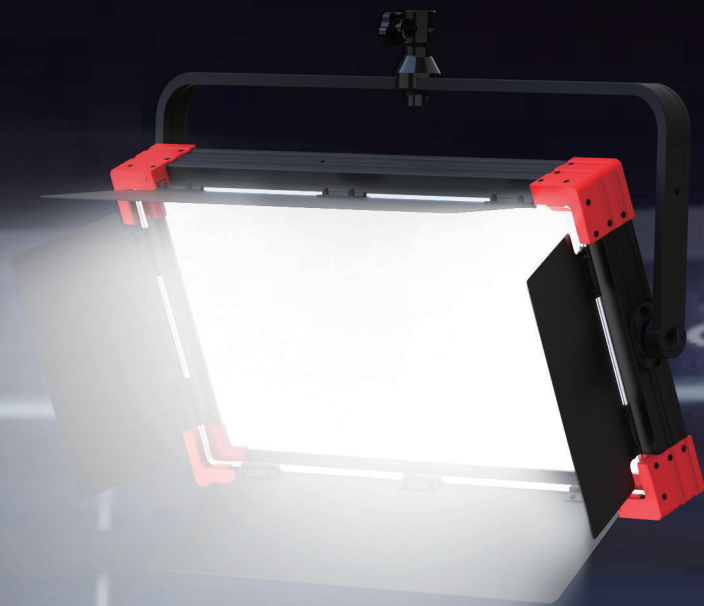


# SWIT



## 150W High Intensity Bi-color SMD-LEDs 4K Studio Panel Light

### PL-S150D



#### 150W, 5500Lux@1m

4K studios request brighter panel lights comparing to HD studios, for reproduce more HDR details. The 2:1 size PL-S150D provides 150W light output and as high as 5500Lux at 1 meter illuminance, twice brighter than regular 100W LED panels.

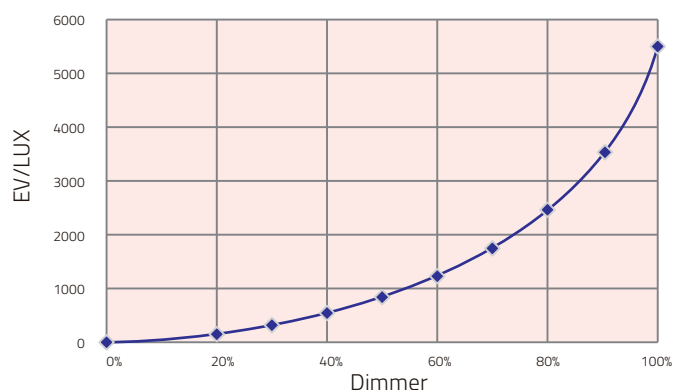


Distance	1 meter	2 meters	3 meters
Illuminance	5500Lux	1380Lux	650Lux



#### Smooth Non-linear Dimming

To produce smooth light output when dimming at low intensity range, PL-S150D provides a non-linear dimming curve, and the 1% dimmer equals to only 0.3% of the full intensity, to match with the sensitivity of human eyes.

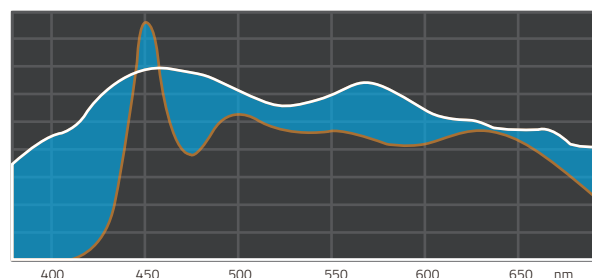
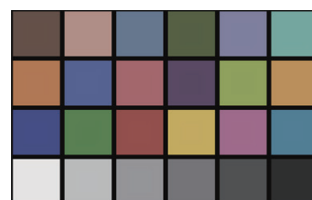
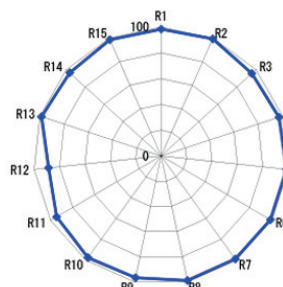


#### 2700K-6500K Adjust

PL-S150D consists of 150W of 2700K LED and 150W of 6500K LED, and outputs 150W power at any color temperature from 2700K to 6500K.



#### CRI 97/TLCI 99/SSI (D55) 73

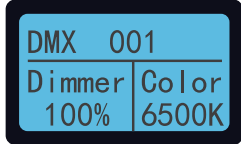




## Power and Control

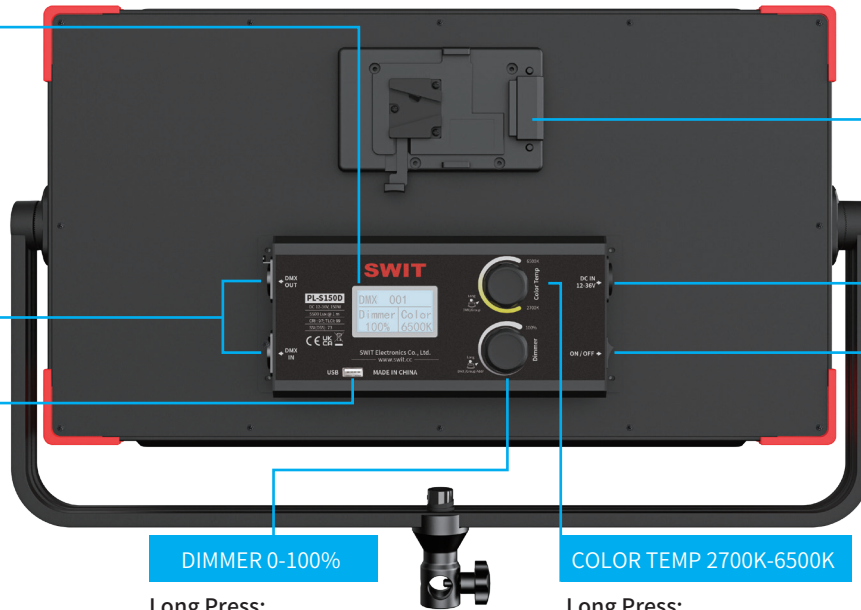
### Control Info Display

Dimming, Color temp, DMX address display.



### 5-pin DMX512 IN & OUT

### 5V USB power output



### On-board V-mount plate

Gold mount for option

### 3-pin XLR DC 12-36V IN

### ON/OFF Switcher



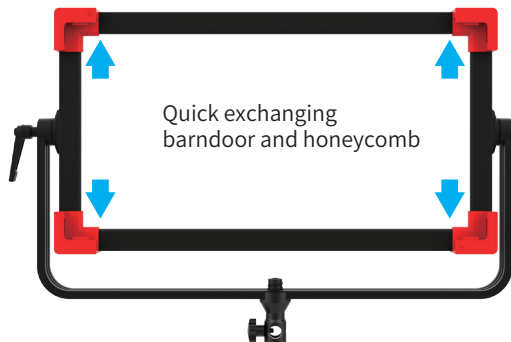
Included: AC-DC adaptor  
Can be fixed onto the V-mount plate of the light.

### DIMMER 0-100%

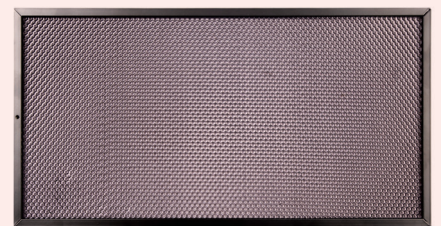
Long Press:  
To set DMX address  
n=Dimmer, n+1=Color temp

### COLOR TEMP 2700K-6500K

Long Press:  
Switch Consoler mode (DMX)  
or Interactive mode (Group)



Included: Quick assembled 4-leaf metal barn door



Optional purchase: 40° honeycomb, **LA-GS150**



## Specifications

### Model PL-S150D

LEDs	1152pcs SMD LEDs
Color Temp	2700K-6500K
Illuminance	5500Lux @ 1m
Beam angle	64° half peak
Color Render	CRI 97; TLCI 99; SSI(D55) 73
Input Voltage	AC 100-240V, 50/60Hz, DC 12-36V
Power	Max 150W
Net Weight	5.8kg incl. Barndoors

