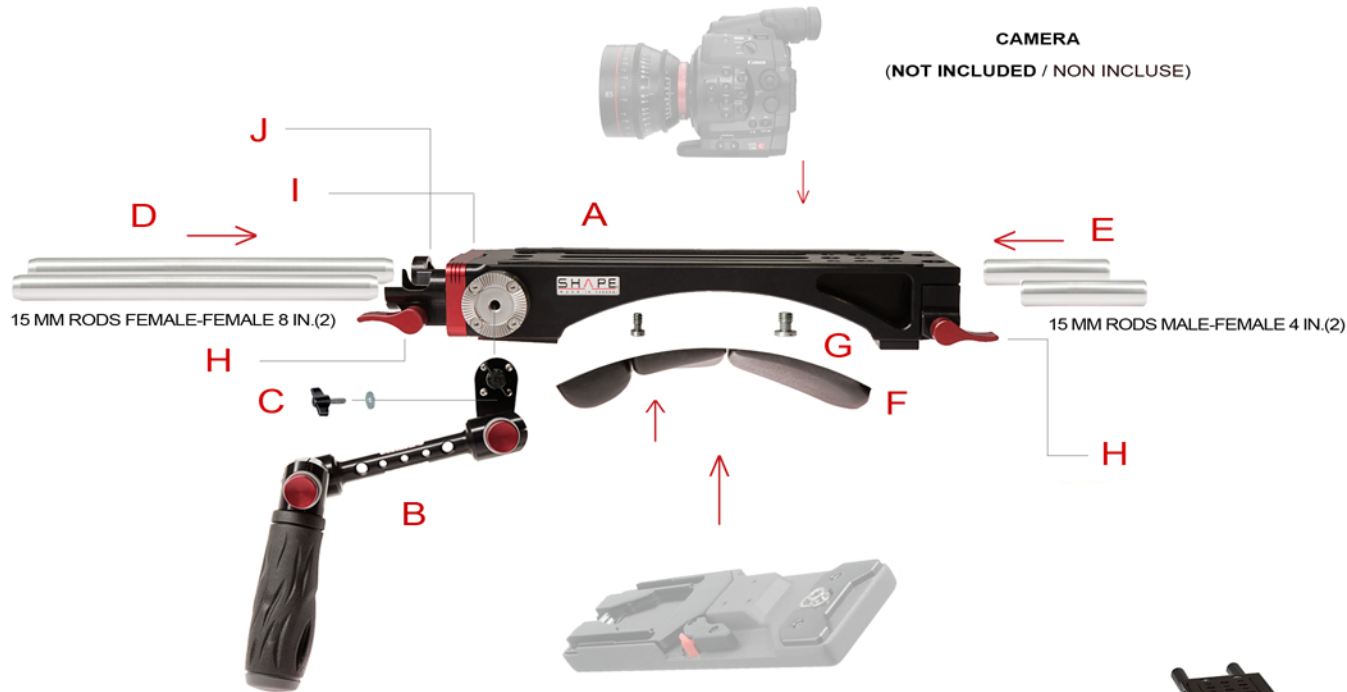


# ASSEMBLY PLAN / PLAN D'ASSEMBLAGE

**SHAPE**  
MADE IN CANADA

## V-LOCK QUICK RELEASE BASE PLATE (BP7000)



CAMERA  
(NOT INCLUDED / NON INCLUSE)

15 MM RODS FEMALE-FEMALE 8 IN.(2)

15 MM RODS MALE-FEMALE 4 IN.(2)

NOT INCLUDED / NON INCLUSE



FINAL RESULT / RÉSULTAT FINAL

### LEGEND / LÉGENDE

- A:** V-LOCK QUICK RELEASE BASE PLATE / PLAQUE RELÂCHEMENT RAPIDE V-LOCK
- B:** DOUBLE QUICK HANDLE ROSETTE (PAIR) WITH 1/4-20 & 3/8-16 THREADED HOLES  
POIGNÉES RAPIDE DOUBLE ROSETTE (PAIRE) AVEC TROUS FILETÉS 1/4-20 & 3/8-16
- C:** SCREWS TO ATTACH HANDLES (INCLUDING WASHER+RETAINING RING)  
VIS POUR ATTACHER LES POIGNÉES (INCLUANT RONDELLES+RONDELLES DE RETENUE)
- D:** 15MM RODS ( 8 INCHES ) FOR THE FRONT ( PAIR )  
RODS 15MM ( 8 POUÇES ) POUR L'AVANT ( PAIRE )
- E:** 15MM RODS ( 4 INCHES ) FOR THE BACK ( PAIR )  
RODS 15MM ( 4 POUÇES ) POUR L'ARRIÈRE ( PAIRE )
- F:** REMOVABLE VELCRO SHOULDER PAD ( TO INSTALL CAPTIVE SCREWS )  
ÉPAULIÈRE VELCRO AMOVIBLE (POUR INSTALLER LES VIS CAPTIVES)
- G:** 1/4-20 & 3/8-16 CAPTIVE SCREWS TO ATTACH CAMERA ( 4 )  
VIS CAPTIVES 1/4-20 & 3/8-16 POUR ATTACHER LA CAMÉRA ( 4 )
- H:** INDEXABLE KEY LEVER / CLÉ INDEXABLE AJUSTABLE
- I:** AJUSTABLE BRACKET (ALLAN SCREWS) / BRAQUETTE AJUSTABLE ( VIS ALLAN )
- J:** AJUSTABLE ROD BLOCK 15 MM LIGHTWEIGHT / ROD BLOCK AJUSTABLE 15 MM LÉGER

TECHNICAL SUPPORT  
SOUTIEN TECHNIQUE

1.888.968.9810  
1.450.812.4712  
www.shapewlb.com

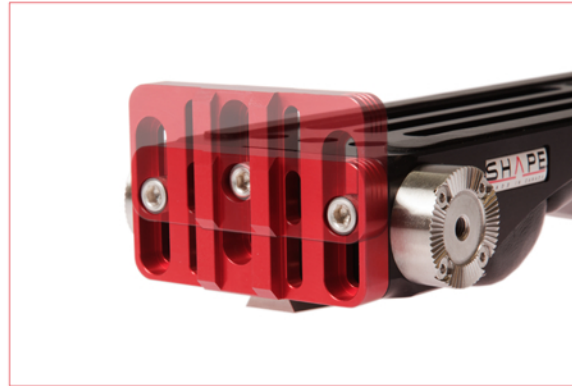
# ASSEMBLY PLAN / PLAN D'ASSEMBLAGE

SHAPE  
MADE IN CANADA

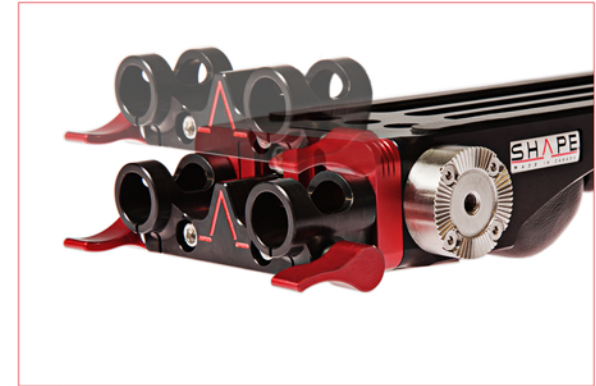
## V-LOCK QUICK RELEASE BASE PLATE (BP7000) AJUSTABLE FEATURES



INTERCHANGEABLE ROD BLOCK  
(15MM LW, 15MM STUDIO, 19MM)  
ROD BLOC INTERCHANGEABLE  
(15MM LW, 15MM STUDIO, 19MM)



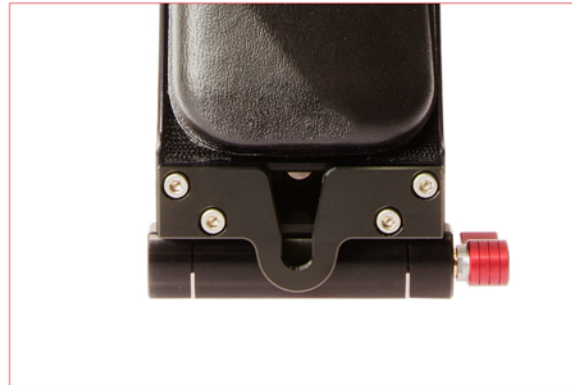
AJUSTABLE FRONT BRACKET  
WITH ALLAN SCREWS  
BRAQUETTE FRONTALE AJUSTABLE  
AVEC VIS ALLAN



AJUSTABLE 15 MM LIGHTWEIGHT BRACKET  
WITH ALLAN KEY (1/4-20)  
BRAQUETTE 15MM LÉGER  
AVEC CLÉ ALLAN (1/4-20)



FRONTAL V-MOUNT TO ATTACH  
IN QUICK RELEASE PLATE LOCK  
V-MOUNT FRONTAL POUR  
ATTACHER DANS LA PARTIE AVANT  
DE LA PLAQUE



REAR LATCH TO ATTACH IN  
QUICK RELEASE PLATE BACK PIN  
LOQUET ARRIÈRE POUR ATTACHER  
SUR LA VIS ARRIÈRE DE LA PLAQUE

TECHNICAL SUPPORT  
SOUTIEN TECHNIQUE

1.888.968.9810  
1.450.812.4712  
www.shapewlb.com

# ASSEMBLY PLAN / PLAN D'ASSEMBLAGE

## V-LOCK QUICK RELEASE BASE PLATE (BP7000) SETUP SOLUTIONS



**A**-V-LOCK QUICK RELEASE BASE PLATE (BP7000)  
**B**-DOUBLE QUICK HANDLE ROSETTE (HAND10)  
**C**-MULTI-PURPOSE MOUNTING CHEESE PLATE with DAZMO battery (CP33)



**A**-V-LOCK QUICK RELEASE BASE PLATE (BP7000)  
**B**-DOUBLE QUICK HANDLE ROSETTE (HAND10)  
**C**-C300 BRACKET (HAC300)  
**D**-PAPARAZZI I BLOC (PA001BLOC)  
**E**-DOUBLE SLIDING ROD BLOCK (RODSUP3)  
**F**-MULTI-PURPOSE MOUNTING CHEESE PLATE with KIPRO MINI (CP33)  
**G**-C300 ADAPTER PLATE (C300AP)

**NOTE:** THESE ARE SUGGESTED SETUP SOLUTIONS WITH ADDED ACCESSORIES, FOR MORE INFORMATION, PLEASE CONSULT OUR WEBSITE OR CONTACT US FOR TECHNICAL SUPPORT.